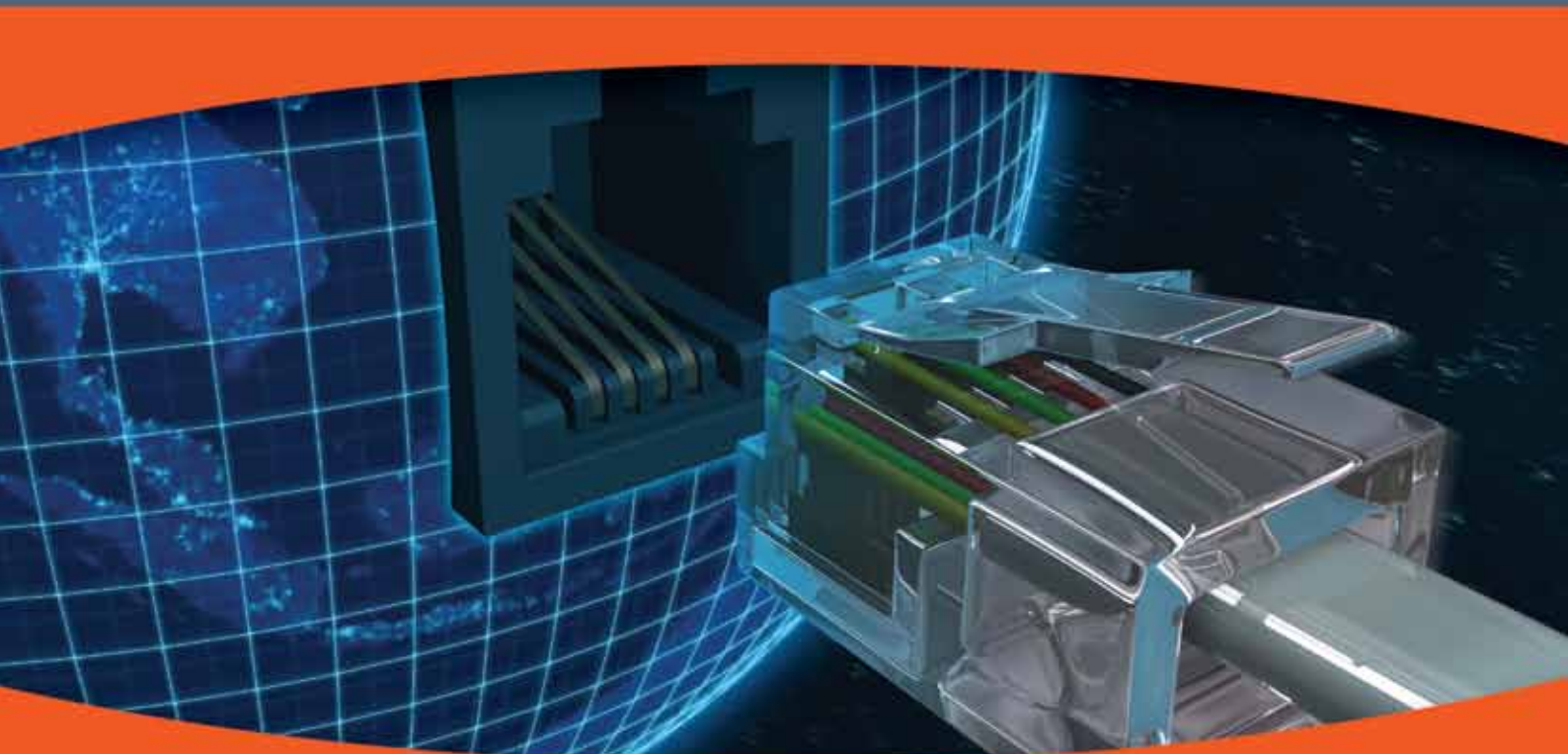


## Enterprise Class Services for Africa

### Satellite based Contended Internet services with a difference



As Africa continues to develop and many countries are becoming 'Newly Industrialised' the growth in business opportunities continues to present challenges to the communications infrastructure. Businesses require fast, reliable and 'always on' communications to the Internet. Last mile connections continue to be a problem and Satellite technology continues to be the most practical solution.

Organisations in Africa have long suffered from poor and unreliable Internet connectivity, and are rightly demanding much improved and targeted services.

CET is pleased to announce its 'Premium Enterprise Class' Internet services via satellite.

Using iDirect's Evolution® DVB-S2/ACM technology allows CET to provide a cost-effective and reliable service to commercial and governmental Internet users. Standard packages are designed specifically for use by those organisations requiring an 'Enterprise Class' of service. The service guarantees a contractually-binding Minimum Guaranteed Data Rate (MGR), with capacity up to the maximum bandwidth available on the link.

## Benefits of the CET Service:

- Minimum Guaranteed Rate (MGR): Using iDirect's enhanced QoS engine CET uses Committed Information Rates (CIRs) to ensure that each VSAT is provided with at least the minimum rate specified for the service taken
- Fair access policy: No limits are made on volume usage but QoS will ensure that all users are allocated a fair and equal amount of bandwidth corresponding to the service taken
- DVB-S2 with ACM (Adaptive Coding and Modulation): Ensures maximum availability
- TCP & HTTP Acceleration
- Automatic Optimisation of RTP traffic such as voice
- Tier 1 Internet access through highly reliable Deutsche Telekom (DT) and British Telecom (BT)

## CET 'Enterprise Services' - Subscription

Service	Contention Ratio	Maximum Rate (Kpbs)	Minimum Guaranteed Rate (Kpbs)
2048/512	1:10	2048/512	204.8/51.2
1024/256	1:10	1024/256	102.4/25.6
512/128	1:10	512/128	51.2/12.8
1024/256	1:5	1024/256	204.8/51.2
512/256	1:5	512/256	102.4/51.2

Please contact us if you require different bandwidth, contention ratios and/or pricing for the above.

## Satellite Coverage

The service is delivered on the Telstar 11N (T11N) satellite.



Satellite: Telstar 11N

Location: 37.5°W

Operator: Telesat

Band: Ku-Band

## Equipment

iDirect's Intelligent Platform™ - DVB-S2/ACM Evolution Hub is located at our Hameln Teleport in Germany.

Remote Site: iDirect Evolution X3 Satellite router combined with 2W / 4W Ku BUC, PLL LNB, 1.2M Antenna (depending on location). Some locations may require a larger antenna and/or BUC - CET will advise on the exact remote equipment required based on the location of the remote.

CET Teleport contract contains a Service Level Agreement (SLA).

To become a CET re-seller or to receive more information about our worldwide Partner Network Programme, please email us at: [info@cetteleport.com](mailto:info@cetteleport.com)



CET Teleport GmbH  
Bexen 2, 31855 Aerzen, Germany  
Tel: +49 (0)5154 937 1500  
Fax: +49 (0)5154 937 1111  
[info@cetteleport.com](mailto:info@cetteleport.com)  
[www.cetteleport.com](http://www.cetteleport.com)